



Total Solution Provider in Saw Device

SL05905AV

59.7MHz IF SAW Filter
5.2MHz Bandwidth
Revision 0 : 10. MAR. 2009



- Electrical Characteristics**
 - Package Dimensions**
 - Testing Environment**
 - Frequency Characteristics**
-

SAWNICS Inc.

460 Cheonheung-ri, Seonggeo-eup, Cheonan-si, Chungcheongnam-do, 330-836 / Korea.
Tel: +82 41 550 9372 / Fax: +82 41 550 9399 / www.sawnics.com

□ Electrical Characteristics

Maximum Ratings

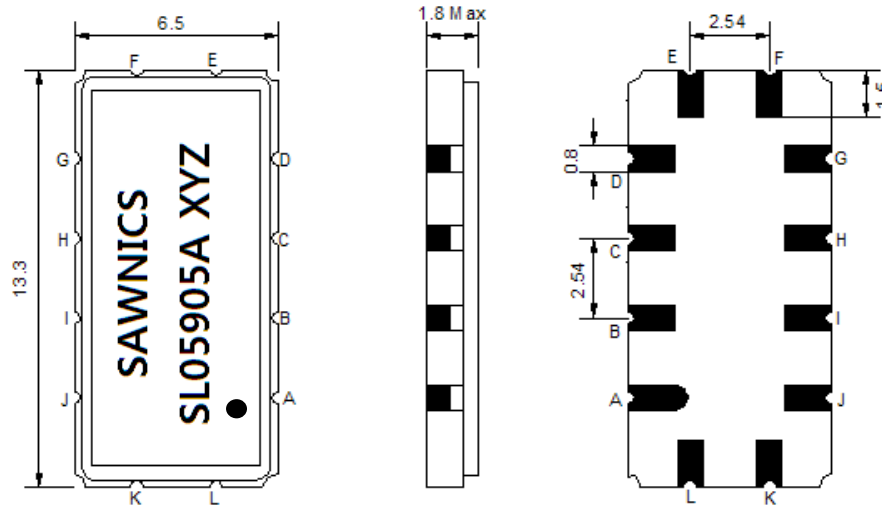
Parameters Description	Unit	Minimum	Typical	Maximum
Operating Temperature Range	°C	-5	-	70
Storage Temperature Range	°C	-40	-	85
Maximum DC Voltage	V	-	-	10
Maximum Input Power	dBm	-	-	10
Source Impedance (single ended) ⁽¹⁾	Ω	-	50	-
Load Impedance (single ended) ⁽¹⁾	Ω	-	50	-
Package type & size	V			
Length x Width	mm ²	-	13.3 x 6.5	-
Height	mm	-	-	1.8

Electrical Specification

Parameters Description	Unit	Minimum	Typical	Maximum
Center Frequency (Fo)	MHz	59.6	59.7	59.8
Insertion Loss at Fo	dB	-	17.0	19.0
Temperature Coefficient	ppm/°C	-	-20	-
Amplitude Ripple within fo ±2.2 MHz	dB _{p-p}	-	0.25	0.6
Group Delay Variation within fo ±2.2 MHz	nsec	-	32	60
Absolute Delay at Fo	µsec	-	1.4	-
Bandwidth at -1.0 dB	MHz	4.40	5.20	-
Bandwidth at -3.0 dB	MHz	-	5.76	-
Bandwidth at -40.0 dB	MHz	-	7.92	8.20
Ultimate Attenuation:	-	40	48	-

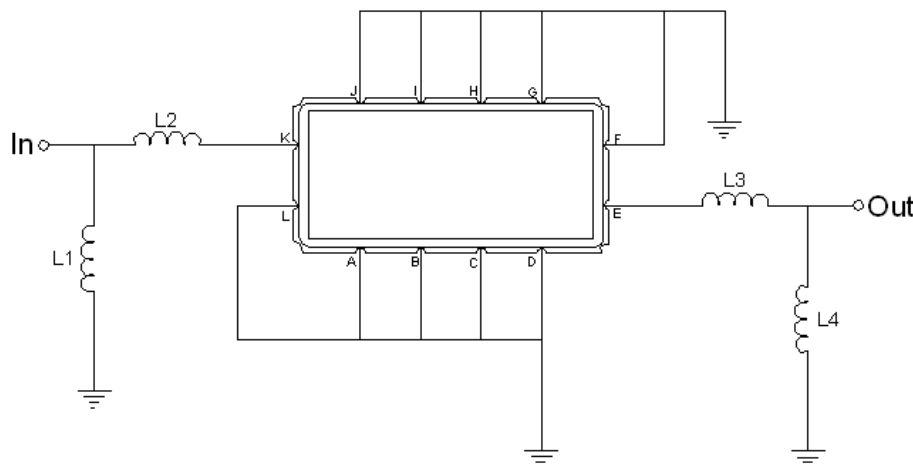
Notes : (1) With Matching Network (Ref. Testing Environment Circuit as shown below).
Those impedances could be modified with different impedance values and/or structures, if necessary.

Package Dimensions



Pin Description	
A, B, C, D, F, G, H, I, J, L	Ground
K	Input
E	Output

Testing Environment



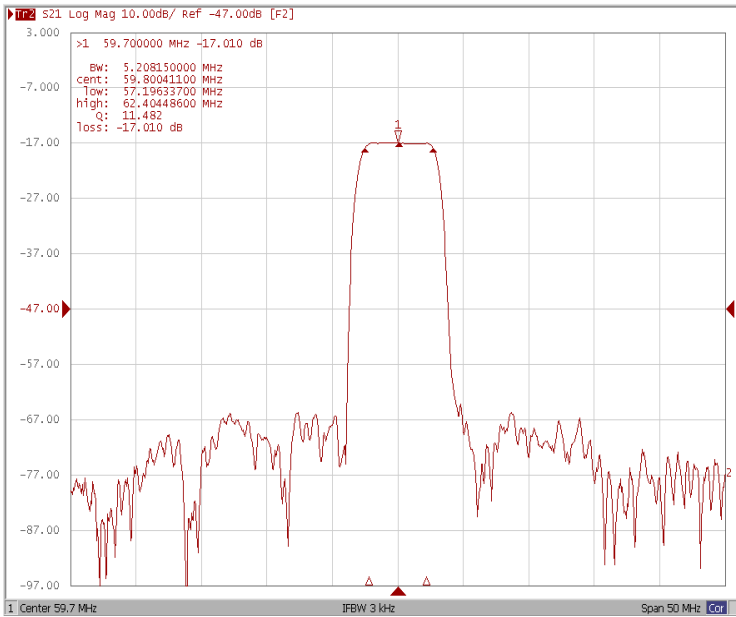
Test Fixture & Values	
Input	L1=82nH , L2=8.2nH
Output	L3=33nH , L4=100nH
Source/Load Impedance	50 Ω



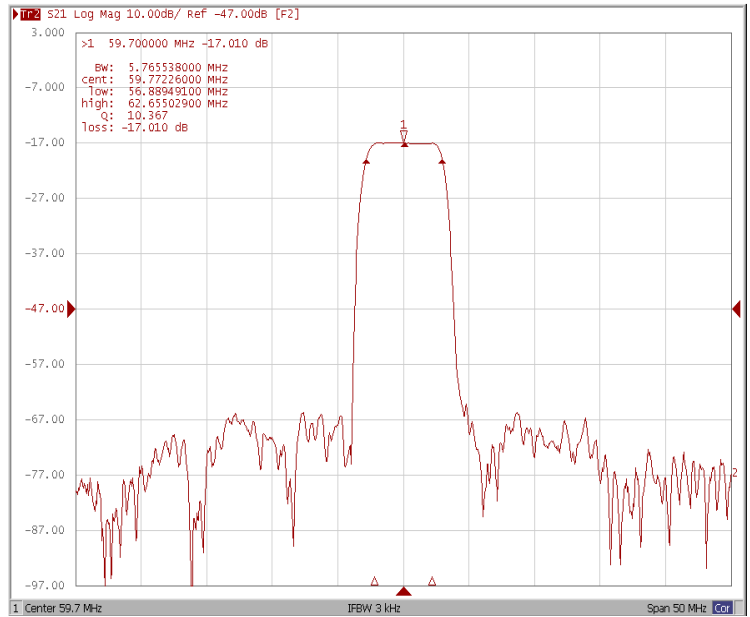
□ Frequency Characteristics

Frequency Response

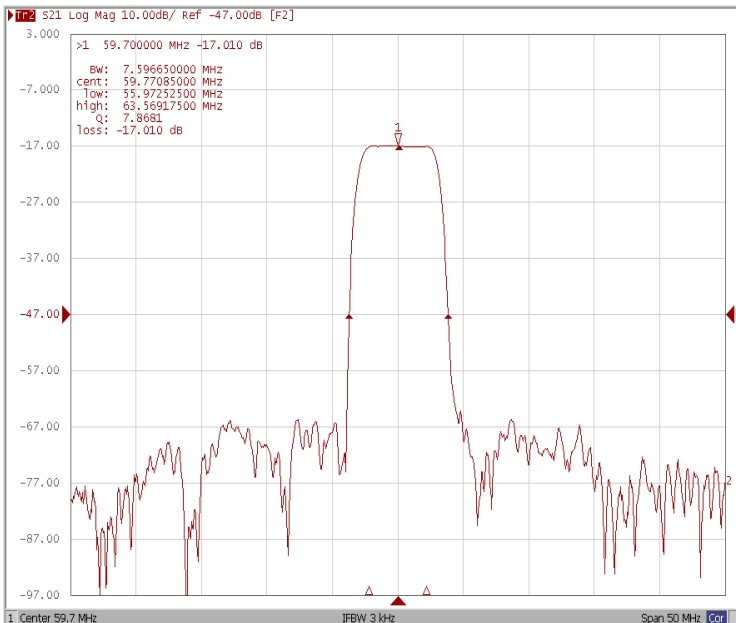
Bandwidth at -1.0 dB



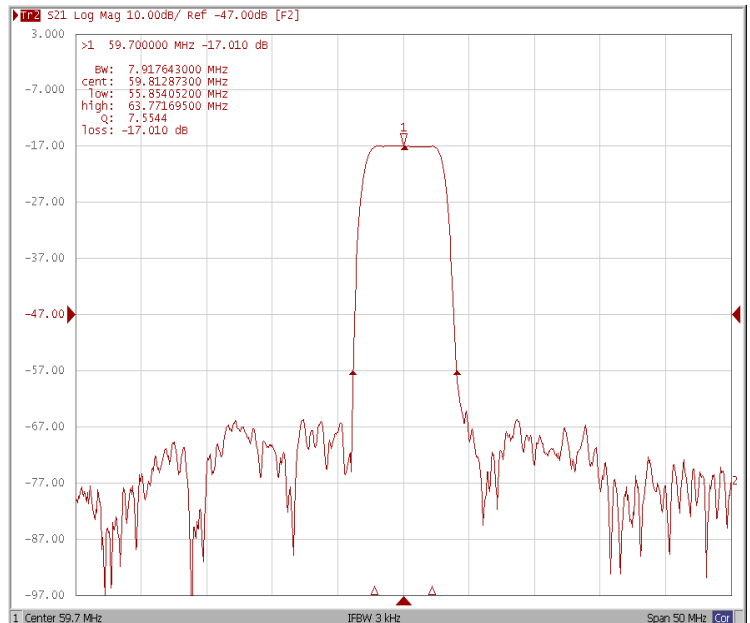
Bandwidth at -3.0 dB



Bandwidth at -30.0 dB



Bandwidth at -40.0 dB

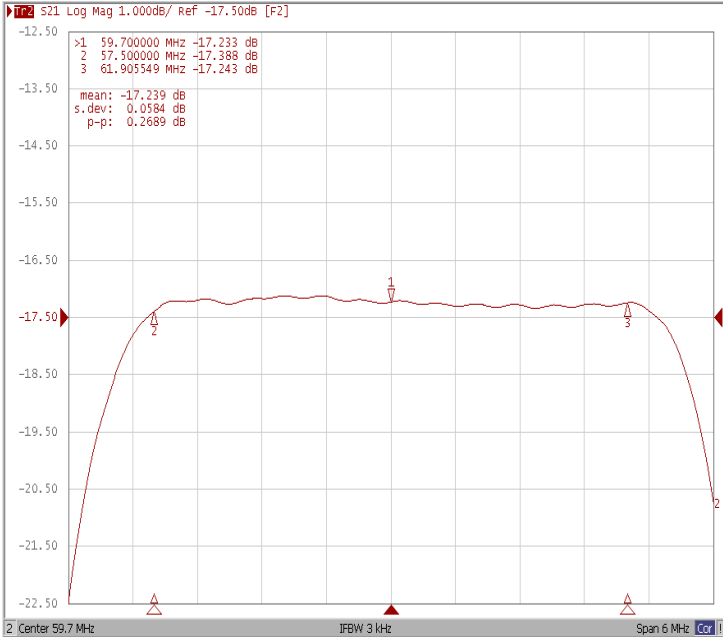




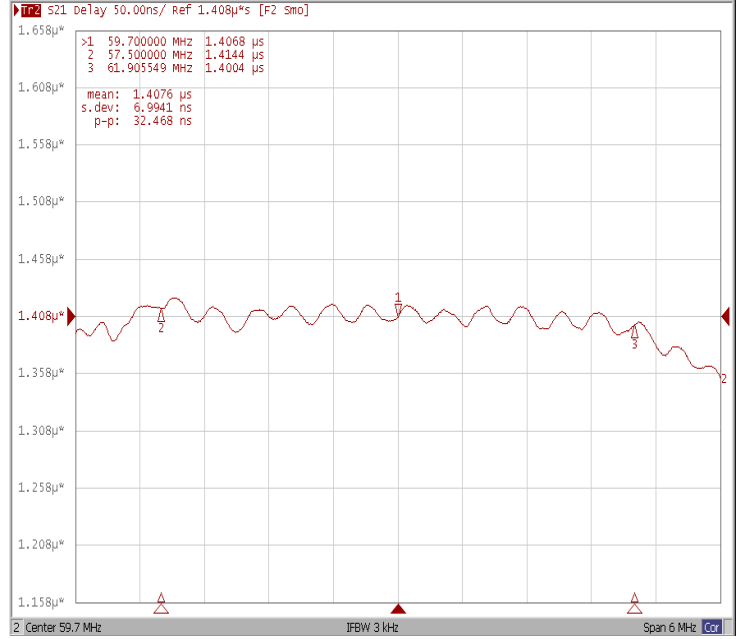
Frequency Characteristics

Frequency Response

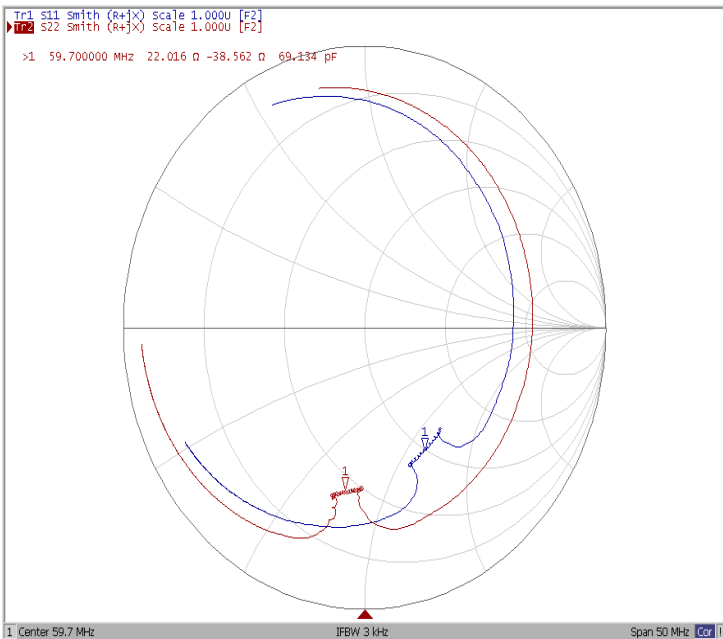
Ripple Variation Fo±2.2MHz



Group Delay Variation Fo±2.2MHz



Smith Chart



VSWR

